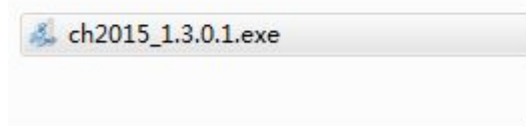


CH2015 USB programmer

Common problems

1. open setup



2. Next



3. Next

CH2015 安装程序

用户信息
请输入您的用户信息，并单击“下一步”继续。

名称：
Microsoft

公司：
Microsoft

< 返回 (B) **下一步 (N) >** 取消 (C)

4. Next

CH2015 安装程序

安装文件夹
您想将 CH2015 安装到何处？

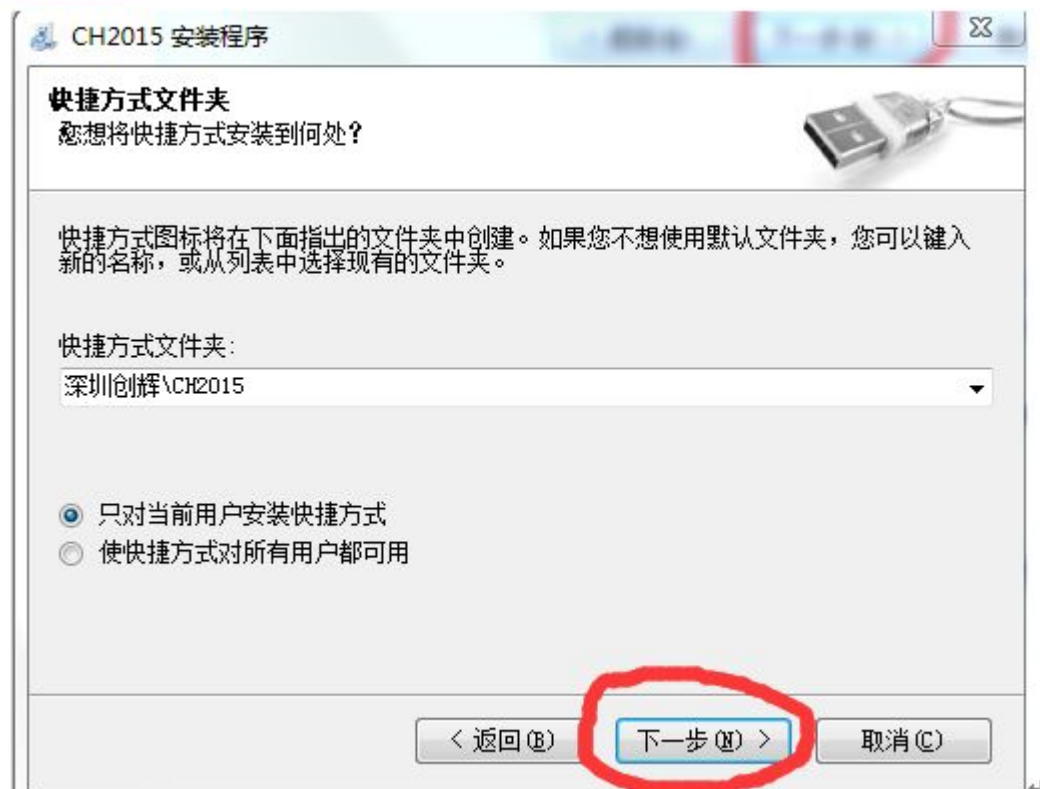
软件将被安装到以下列出的文件夹中。要选择不同的位置，键入新的路径，或单击“更改”浏览现有的文件夹。

将 CH2015 安装到：
C:\Program Files\深圳创辉\CH2015 更改 (H)...

所需空间：3.53 MB
选定驱动器的可用空间：15.19 GB

< 返回 (B) **下一步 (N) >** 取消 (C)

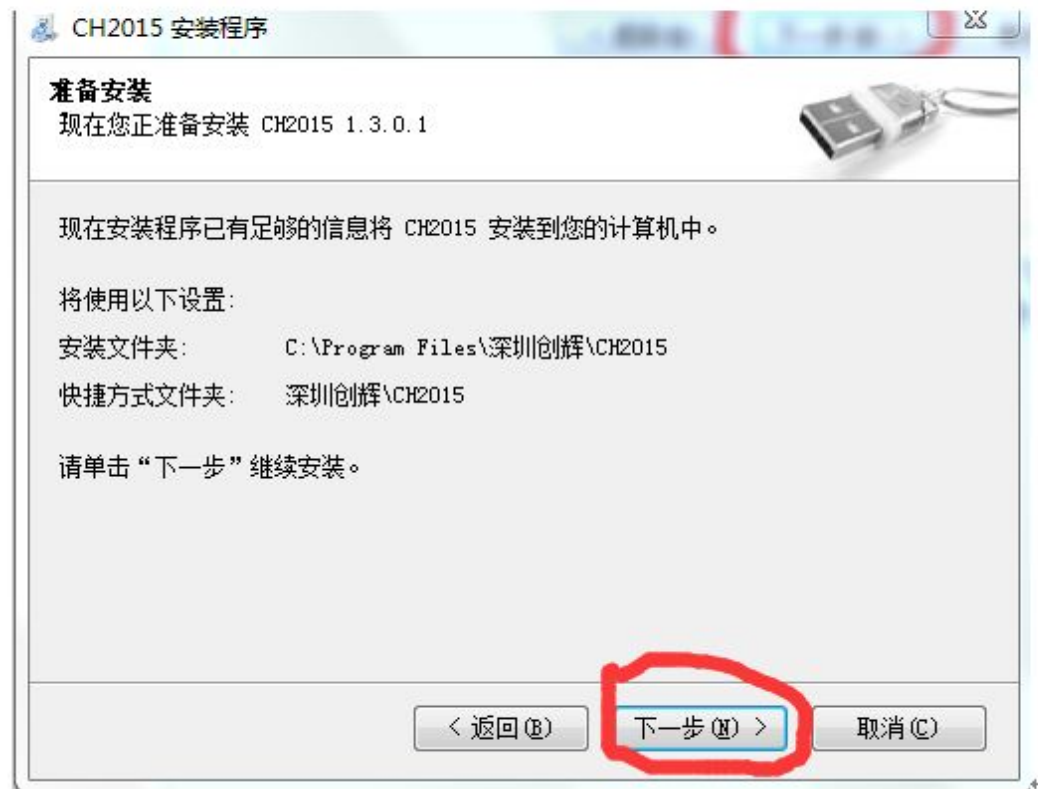
5. Next



6. Next



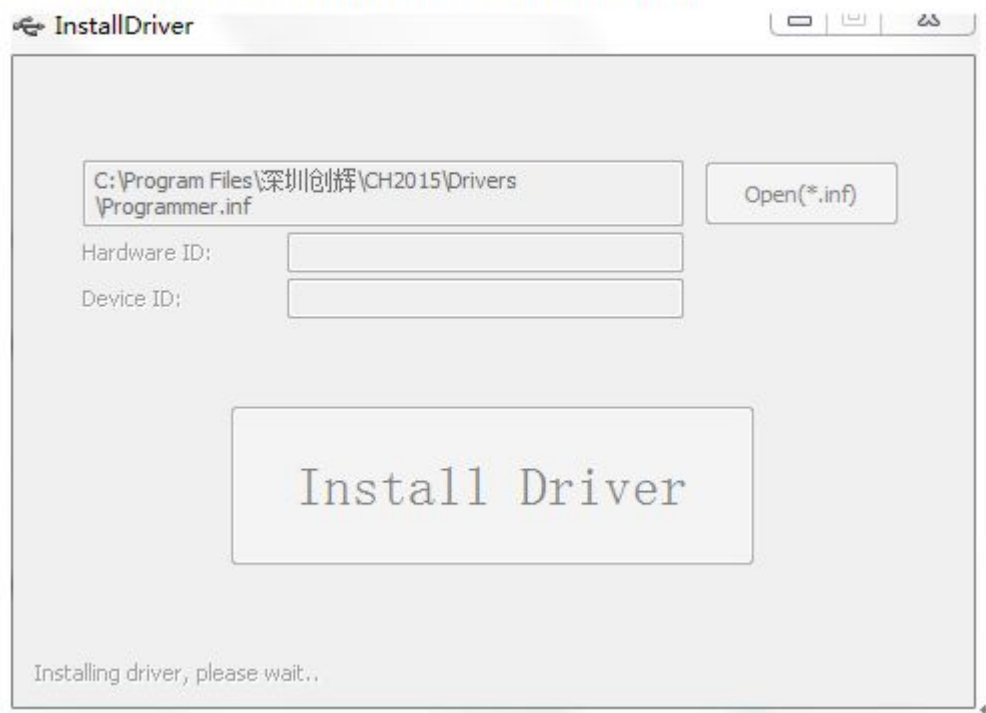
7. Next



8. Is being installed



9. Do not shut down. Please Wait.



10. Installation complete.



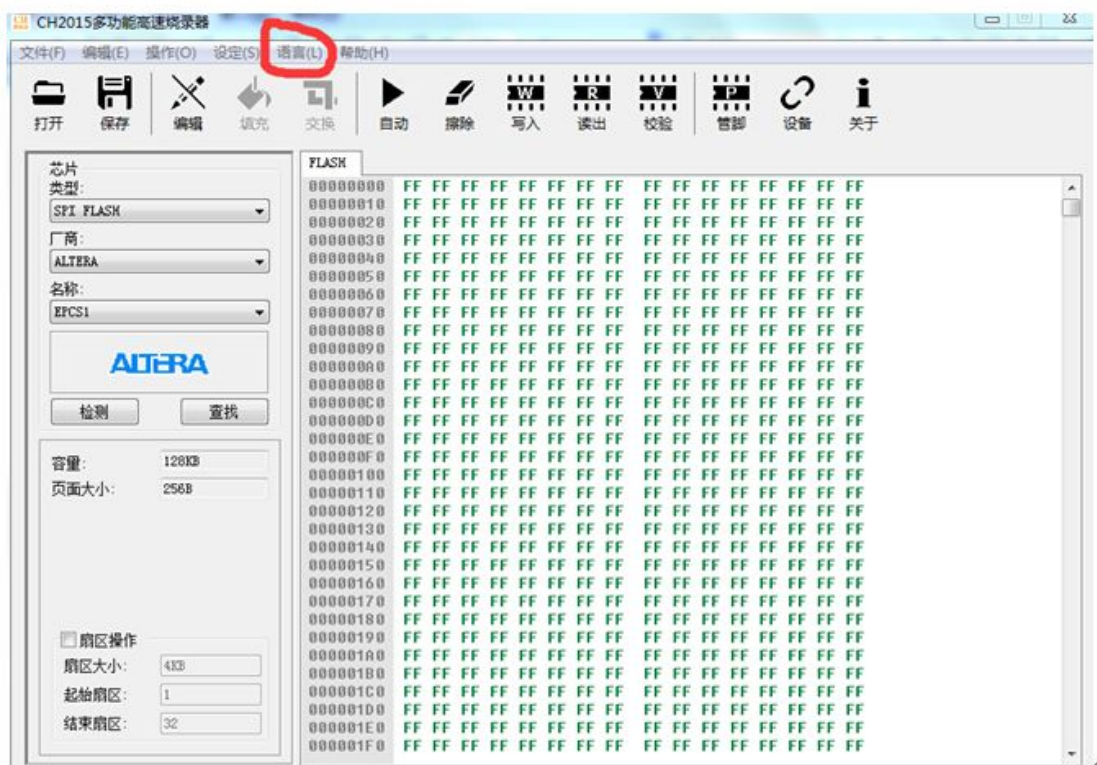
11. Connect USB programmer

Open software interface



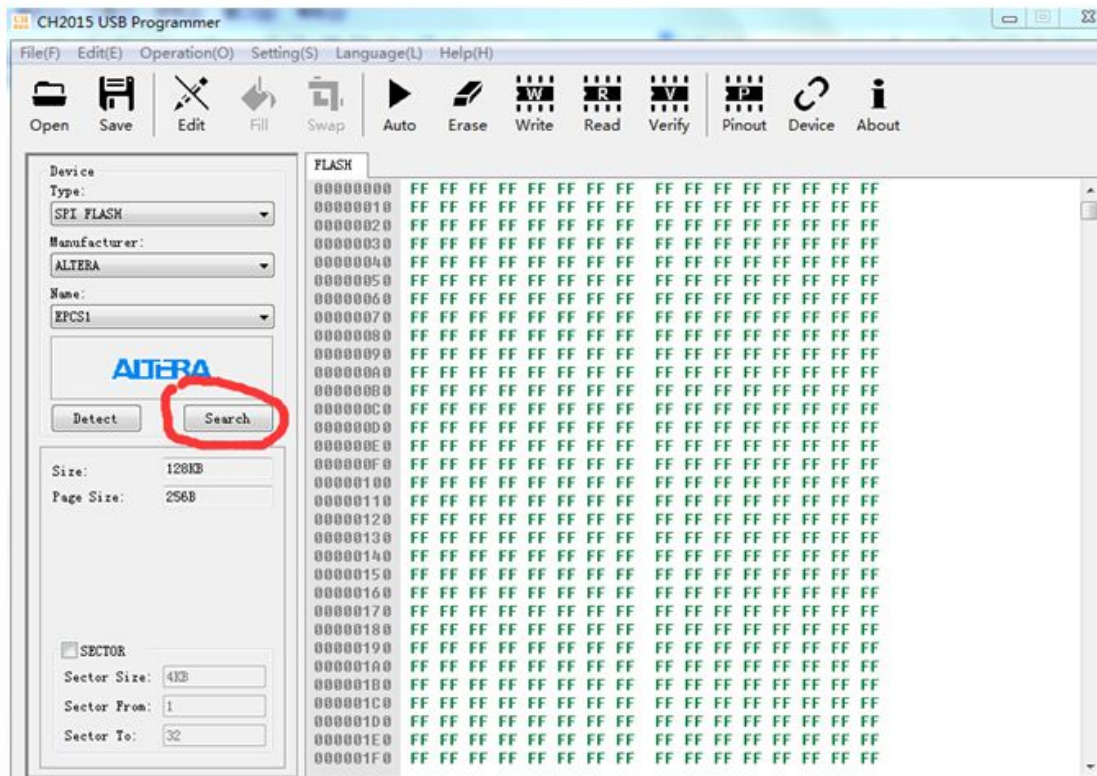
12. Click language

In the drop-down menu, there are English options



Select the mode of chip type?

01. Click search

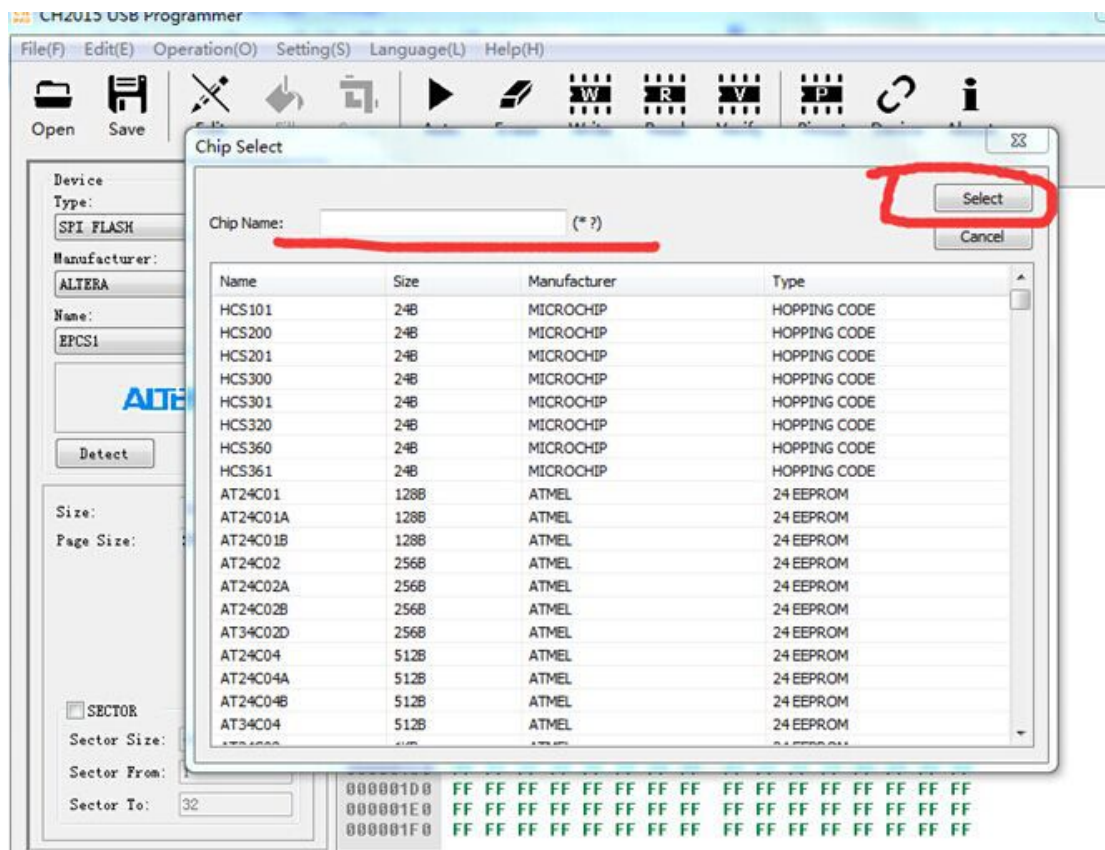


02. Enter the chip model in the dialog box.

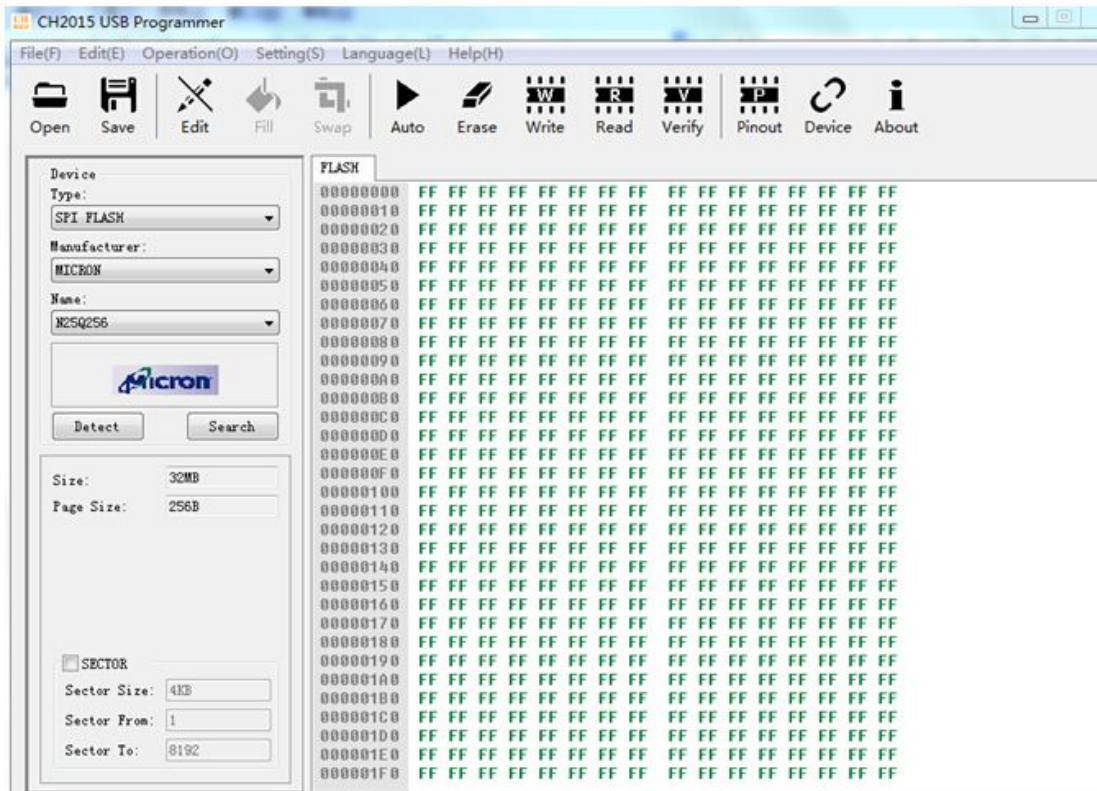
For example:

*25Q256

Note: the model must be added before *



03. Complete selection



How to work?

01. Select chip type

02. opening file

03. Burning

04. check

05. Check the results OK, on behalf of the burn and write
normal end

